



| A PROJECT BY : **Ashiana Lifestyle**

ARCHITECT  
Atul Patel Architects

RCC CONSULTANT  
B. S. Sukthankar & Associates

MEP CONSULTANT  
Econ Pollution Control

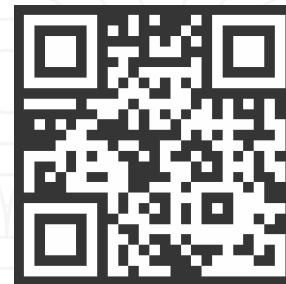
INTERIOR DESIGN CONSULTANT  
Vijay Lad and Associates

SITE ADDRESS :  
Gut No 75/1A., Kewale, Panvel - 410 206.

HEAD OFFICE :  
Ashiana Group, Office No. 02, First Floor, Mahavir Shopping Center, Plot No 05,  
Sector 11, Opposite Nerul Bus Depot, Nerul East, Navi Mumbai 400 706.  
Email ID : [info@ashianagroup.net](mailto:info@ashianagroup.net) | Website : [www.ashianagroup.net](http://www.ashianagroup.net)

FOR BOOKINGS CONTACT :

MahaRERA No. P52000021424 [www.maharera.it.mahaonline.gov.in](http://www.maharera.it.mahaonline.gov.in)



Future Icon - Kharghar | 84199 41177



**PANVEL PRIDE**  
Kewale, Panvel

Let us guide you **HOME**

Disclaimer : • All plans, drawings, amenities, facilities etc. are subject to the approval of the respective authorities and would be changes, if necessary. • The discretion remains with the developer. • All rendering, floor plans, pictures and maps are the artist's conceptions and not actual depictions of the building, its walls, roadways or landscaping. • This brochure is for guidance and not a legal document. • This is not an offer document. • This brochure should also not be reproduced, copied or made available to others in any form of transmission other than intended by the developer. • The design & specifications depicted in the brochure are subject to change without prior notice. • Proposed development in the brochure is subject to approval of competent authorities. • Permissions for 4th floor, swimming pool and temple is awaited from CIDCO Ltd.





## ASHIANA GROUP

We, at Ashiana Group, assure you of providing timely delivery of your dream home with assured quality. Providing exemplary services is essential for us and with our dedicated team of Professionals, we aspire to provide you quality homes beyond your dreams. All our Projects are MahaRERA Registered. We have successfully completed a humble of projects at Nerul, Kharghar, Kamothe, Ulwe, Karanjade and Panvel achieving a substantial amount of customer satisfaction. We have ongoing projects at Bhivpuri (Karjat), Karanjade and Panvel.







# PANVEL PRIDE

Let us guide you HOME

## AN UPLIFTING LIFESTYLE THAT'S CRAFTED AROUND LIFE

Panvel Pride is our Flagship Project conceptualized to provide luxurious living located at the heart of the ever expanding and increasingly well connected Panvel Region. The Project being close to nature, provides a sense of positivity and a breath of fresh air to those living here. Aesthetically appealing and assuring in Quality, Panvel Pride is a Lifestyle surely to be experienced.

### Highlights of the Project

- Project approved by CIDCO Ltd under NAINA,
- 10 Buildings of G + 4 Storeyed Residential Apartments,
- Grand Entrance Lobby in all Buildings,
- Exclusively well planned 1 RK, 1 BHK and 2 BHK Residencies,
- Best in class External Amenities and exclusive internal specifications,
- Bus facilities exclusively for the resident of Panvel Pride,
- Provision of Grey Water Recycling Plant,
- Schools, Hospitals, Shopping facilities nearby,
- Benefits of up to Rs. 2.67 lakh under PMAY (Pradhan Mantri Awas Yojana)
- Loan facility from leading Banks and Financial Institutions,



artistic impressions



## EVERY PART OF YOUR HOME CRAFTED TO DETAIL



### FLOORING

- 800 \* 800 Vitrified Tiles (Kajaria, RAK, Varmora or Equivalent Make).



### KITCHEN

- Granite Kitchen Platform with S.S. Sink.
- Decorative Ceramic Tiles up to Door Level



### WINDOWS

- Powder Coated Aluminium Sliding Windows with Marble Sill.
- Louvered Windows in Bathroom and W. C.



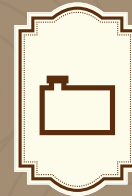
### PAINT

- Internal Walls with Distemper Paint.
- External Wall with Acrylic Paint.



### ELECTRICAL

- Sufficient Electric Points with ISI Marked Switches in all rooms.
- TV Cable Point in living Room.
- AC Point in Bedroom.



### WATER TANK

- Underground & Overhead Tank



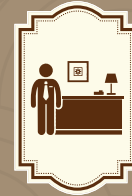
### BATH / WC

- Decorative Ceramic Tiles upto Door Level.
- Concealed Plumbing Fixtures of Premium Quality including provision of Diverters (Kerovit or Jaquar or Equivalent).
- Wall mount W. C.



### DOOR

- Designer Laminated Main Doors with elegant fittings.
- Moulded Bedroom Doors



### LOBBY

- Decorative Entrance Lobby in all buildings.



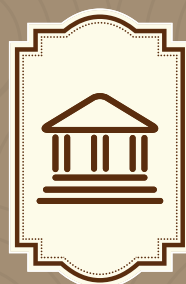
### LIFT

- Lift of Reputed Company.





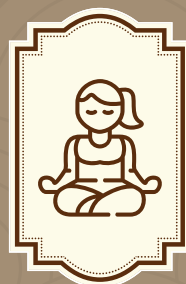
PROJECT AMENITIES



Clubhouse



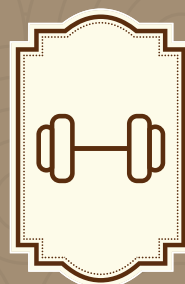
Swimming Pool



Yoga and Meditation Garden



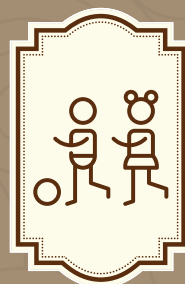
Party Lawn



Gymnasium



Ganpati Temple



Children Play Area



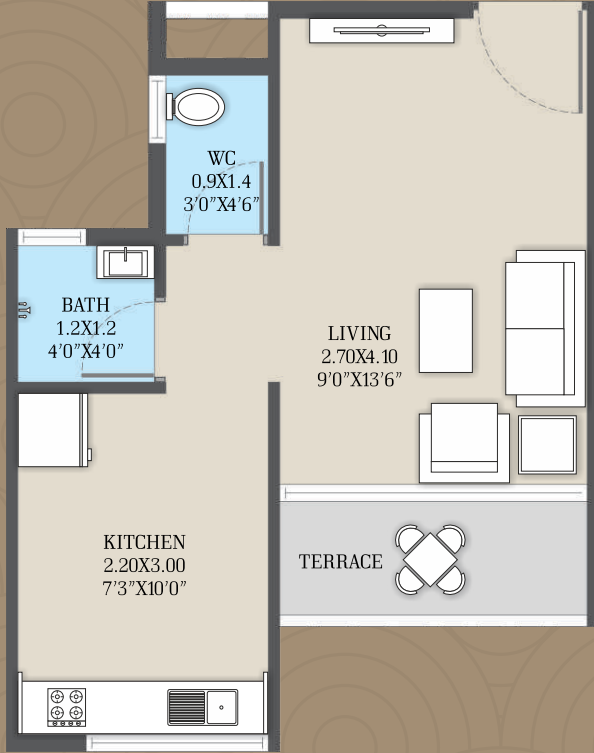
Jogging Track



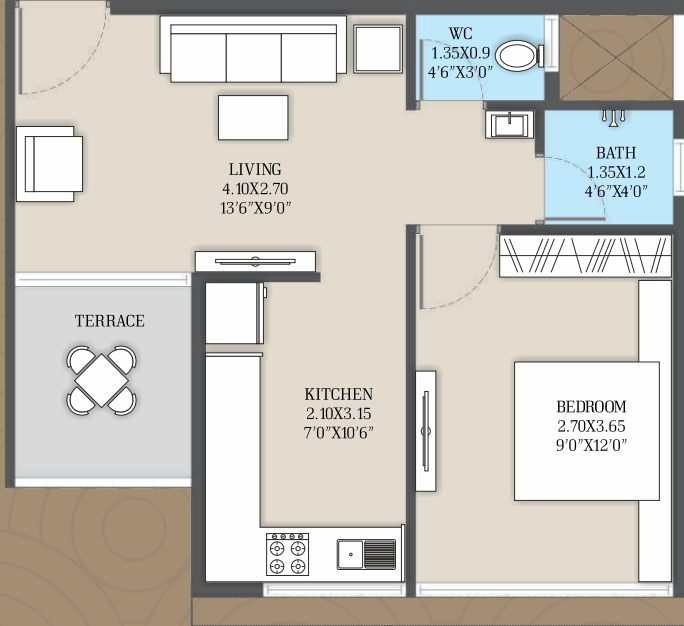
artistic impressions



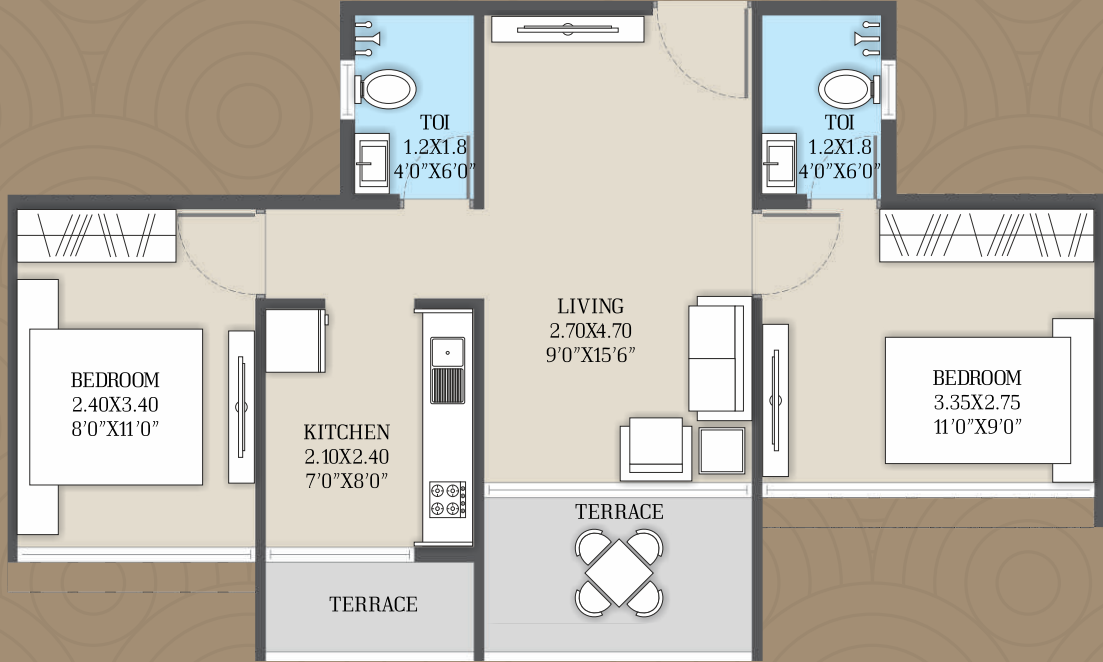
1 RK ISOMETRIC VIEW



1 BHK ISOMETRIC VIEW




2 BHK ISOMETRIC VIEW






# PROJECT LOCATED IN THE PROXIMITY OF ALL DAILY NEED CONVENIENCES


Schools and Hospitalsin the neighborhood, Upcoming International Airport, Railway Station and Bus Depot in the vicinity, Panvel Pride is truly an ideal address for your dream home.




**PANVEL RAILWAY STATION**  
Frequent Trains to Mumbai CST, Thane and Andheri. Outbound trains also orginate or halt at Panvel Railway Station. Located 5.75 km away from Panvel Pride, it takes barely 17mins to reach the Railway Station.




**PANVEL BUS DEPOT**  
The Panvel Bus Depot is an important hub located around 6 km from Panvel Pride.




**UPCOMING NAVI MUMBAI INTERNATIONAL AIRPORT (NMIA)**  
A true game changer which makes Panvel a mega destination for the future. Located just 10 km away from Panvel Pride




**UPCOMING MUMBAI TRANS HARBOUR LINK**  
Envisioned as the longest sea bridge in India and the second longest sea link in the world, providing connectivity to NMIA from Sewri in South Mumbai to Nhava Sheva in Navi Mumbai.




**UPCOMING VIRAR-ALIBAUG MULTIMODAL CORRIDOR**  
This 126-km-long corridor enables connectivity to NMIA and other important nodes of Navi Mumbai.




**HOSPITAL**  
MGM Hospital is a government backed Multi speciality Hospital located just 15 mins away. Also, Meenaxshi & Gangadhar Bhat Memorial Hospital is located adjoining Panvel Pride for emergencies.



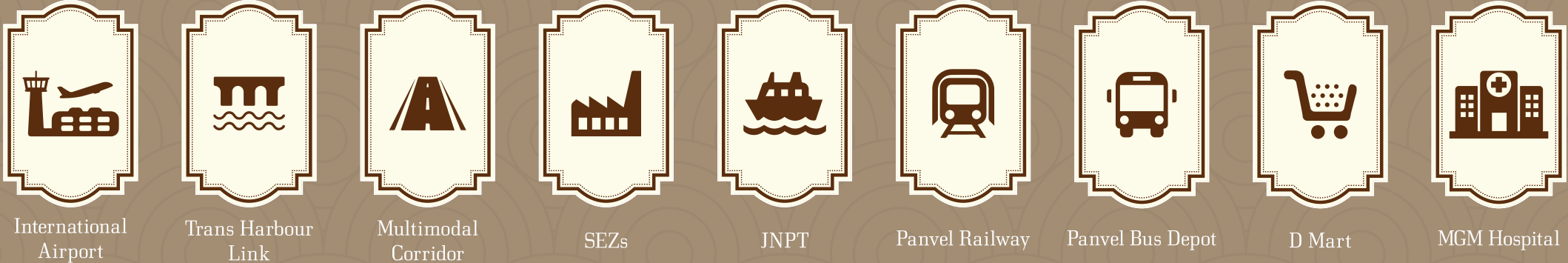
**MALLS AND PARKS**  
D-Mart, Orion Mall, K Mall, Kharghar Golf Course, Karnala Bird Sanctuary



**MIDC, PORT & SEZs:**  
Proximity to Industrial and Special Economic Zones



**EDUCATIONAL INSTITUTION**  
DAV Public School, St. Joseph High School, Pillais College of Arts, Commerce and Science, Pillais College of Engineering, CKT College, Amity University are all located in Panvel. Ram Krishna Academy, an English medium School is located at a stones throw distance from Panvel Pride.







artistic impressions

## SOME OF OUR COMPLETED PROJECTS



Gut No. 88, 94,96/2, Akruli Village, Off Panvel Matheran Road, New Panvel



Plot No. 207, Sector 17, Ulwe, Navi Mumbai



Plot No. 63, Sector 21, Kamothe, Navi Mumbai



Plot No. 43, Sector 5, Karanjade, Panvel

## OUR ONGOING PROJECTS



Plot No 25, Sector 03, Karanjade



Plot No 308, Sector R3, Pushpak, Karanjade



Plot No. 211, Sector R4, Pushpak, Karanjade



Survey 84/1A, Ukrul, Bhivpuri, Karjat



Survey 96/1, Ukrul, Bhivpuri, Karjat

