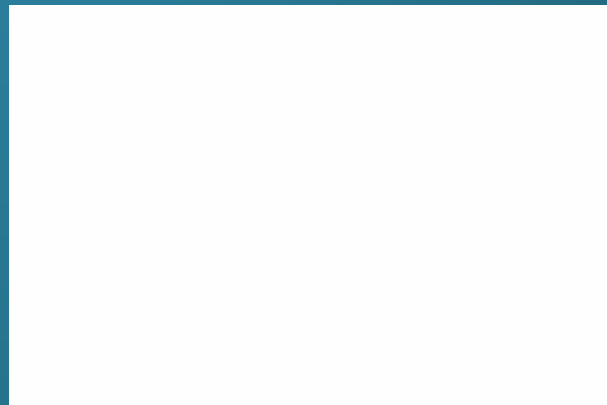


OUR CHANAL PARTNER



📍 Office Address : 02, 1st Floor, Mahavir Shopping Center, Sector 11, Nerul (E), Navi Mumbai - 400 706.

🌐 www.ashianagroup.net ✉ info@ashianagroup.net

Note: Content in this brochure are Conceptual & Artist Image

Pratik Hills

 MAHA RERA - P52000019701

Plot No. 308, Sector-R3, Vadghar, Panvel

ABOUT US

We ASHIANA GROUP are building residential & commercial projects in navi Mumbai since last 19 years.

Our group has a professional and qualified management and comprising of Civil Engineers, MBA's and Chartered Accountants.

As a group we have successfully completed and handed many projects to our customers in the past 19 years. in various nodes of Navi Mumbai such as kamothe ,Ulwe, Karanjade, Kharghar, Nerul and Panvel. Over the next few years we plan to construct and deliver quality homes to over 250 families in Bhivpuri – Karjat, and upcoming project of around 400 flat in panvel.

Our most valuable achievement is we have completed all the projects well before schedule.

Our mission is to construct and deliver quality affordable housing within stipulated time frames.

Vadghar, CIDCO developed promising node,

vadghar is located in the centre of well developed city of panvel.

Its well connected with rail with two railway station nearby panvel and khandeshwar, Bus services is also available.its connected with Mumbai pune highway and JNPT road.

Upcoming international air port is within five kilometer .

Market, school, collage , hospital and other facilities are in the vicinity .

Wide road with drainage and street light with reservation for school and garden makes it most beautiful city.

Silent features of projects,

“PRATIK HILLS ” & “ PRATIK HERITAGE ” both are corner plots with 15 meter and 9 miter wide road giving each flat ample ventilation.

Both the projects are well designed G + 6 story buildings with shops.

Projrcs have been executed through well known architect and structural engineers.

SOME OF OUR OLD PROJECTS



DEVELOPERS ASHIANA BUILDCON ARCHITECT ATUL PATEL
PRATIK PRIDE PLOT NO - 25,SECTOR - 3, KARANJADE.



SPECIFICATIONS

FLOORING

Vitrified Tiles (Kajaria, RAK, Varmora or Equivalent).

KITCHEN

Granite Kitchen Platform with Stainless Steel Sink
Decorative Ceramic Tiles up to Door Level.

DOORS

Decorative Laminated Main
Doors - Moulded Bedroom Doors.

WINDOWS

Powder Coated Aluminum Sliding Window with
Marble Sill, - Louvered Windows in
Bathroom and W.C.

BATHROOM & W.C.

Decorative Ceramic Tiles. - Concealed Plumbing
Fixtures of Premium Quality (Kerovit or Equivalent).
Good Quality C.P. Fittings including provision of
Bathroom Diverters (Kerovit or Equivalent).
Indian W.C.

PAINTS

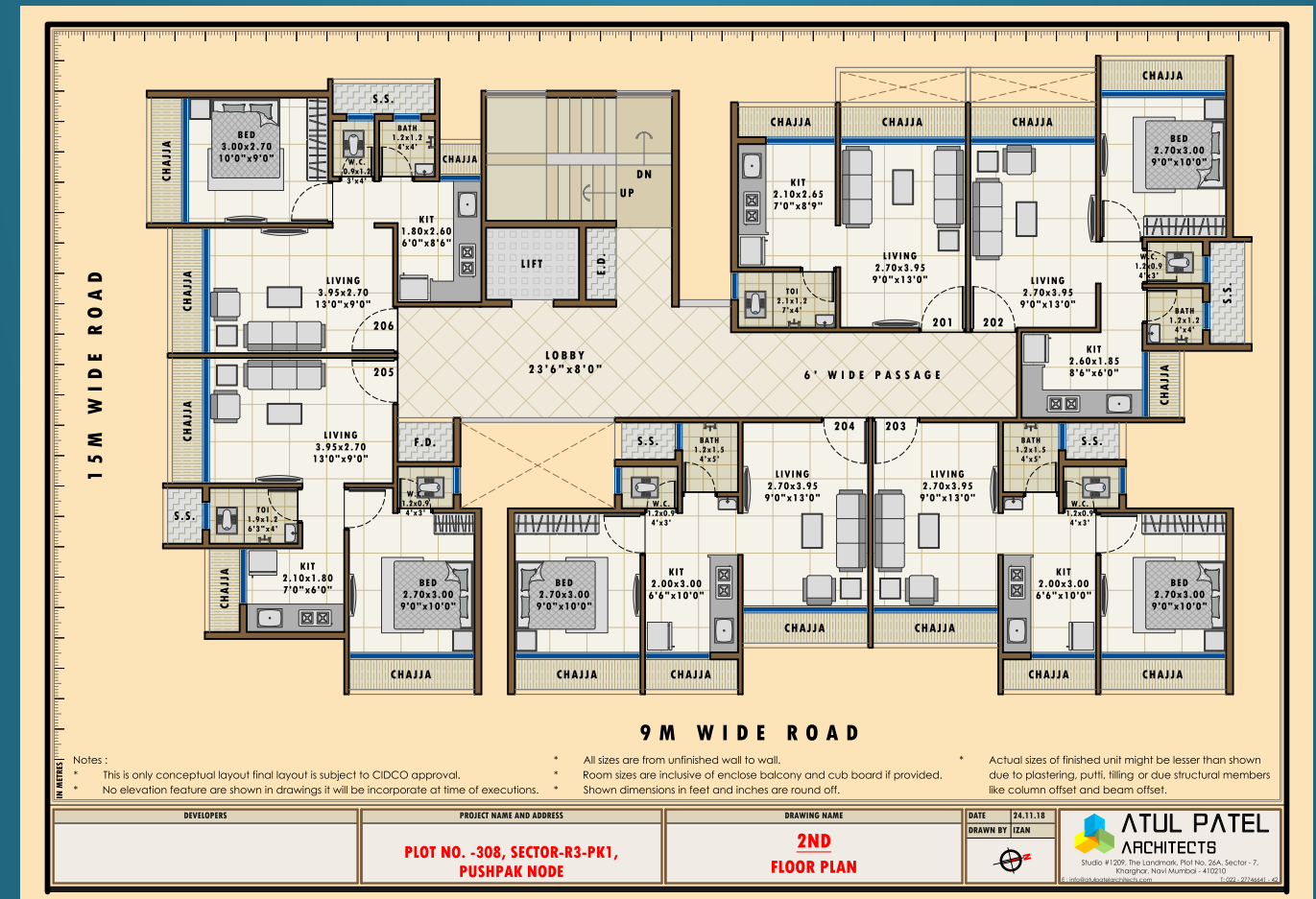
Good Quality Plastic Paint For Internal Walls,
Good Quality Acrylic Paint For External Walls,

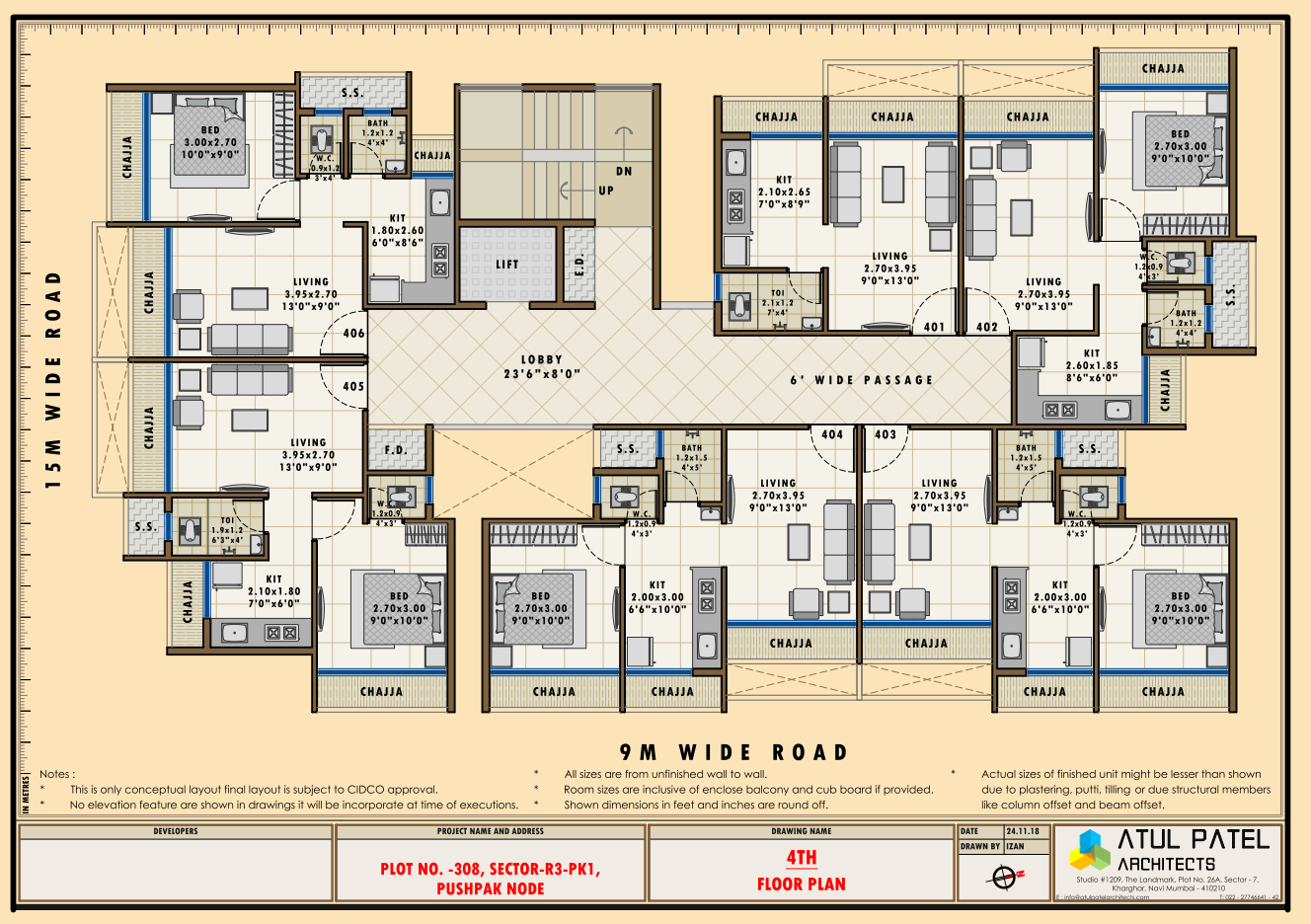
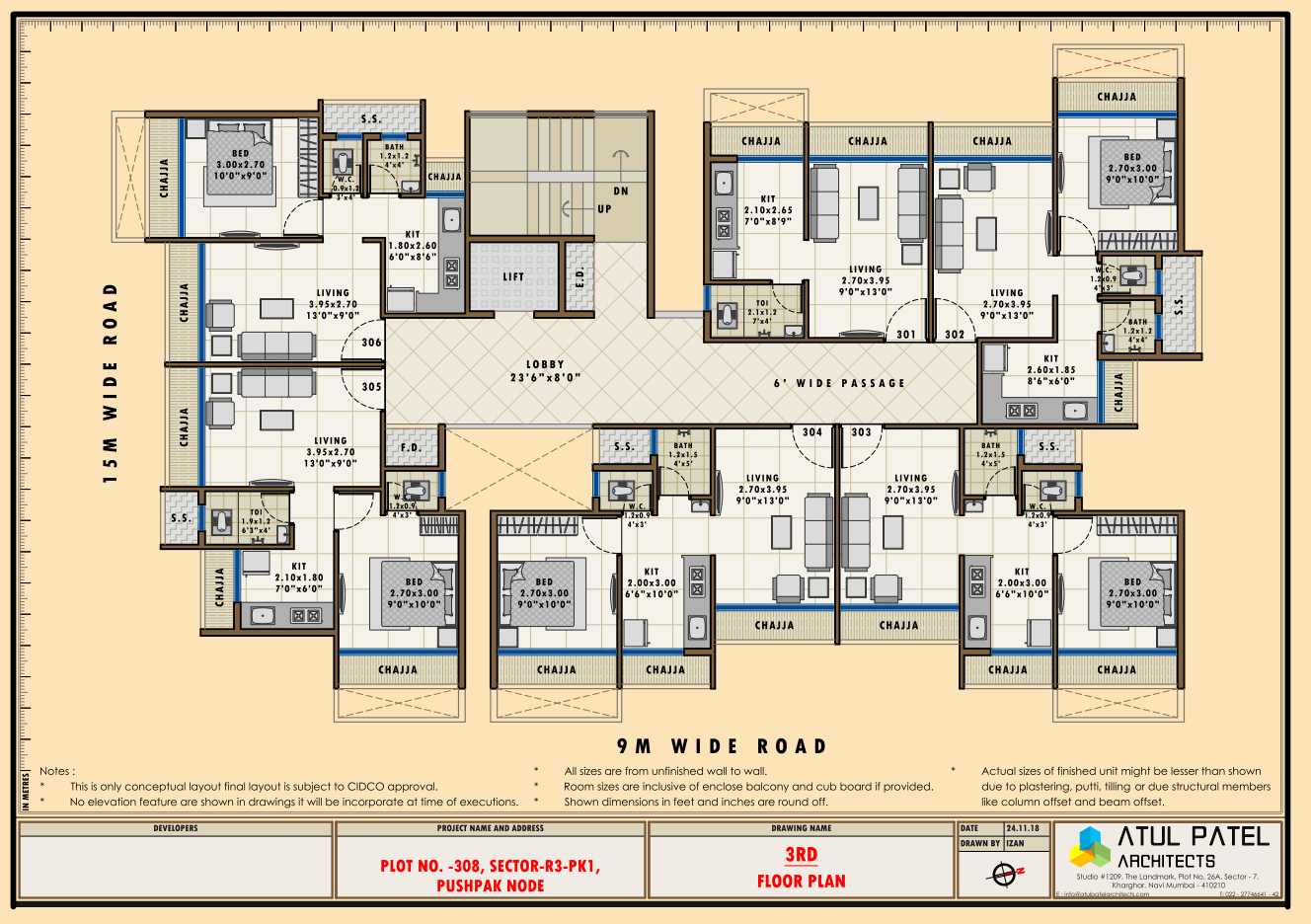
ELECTRIFICATION

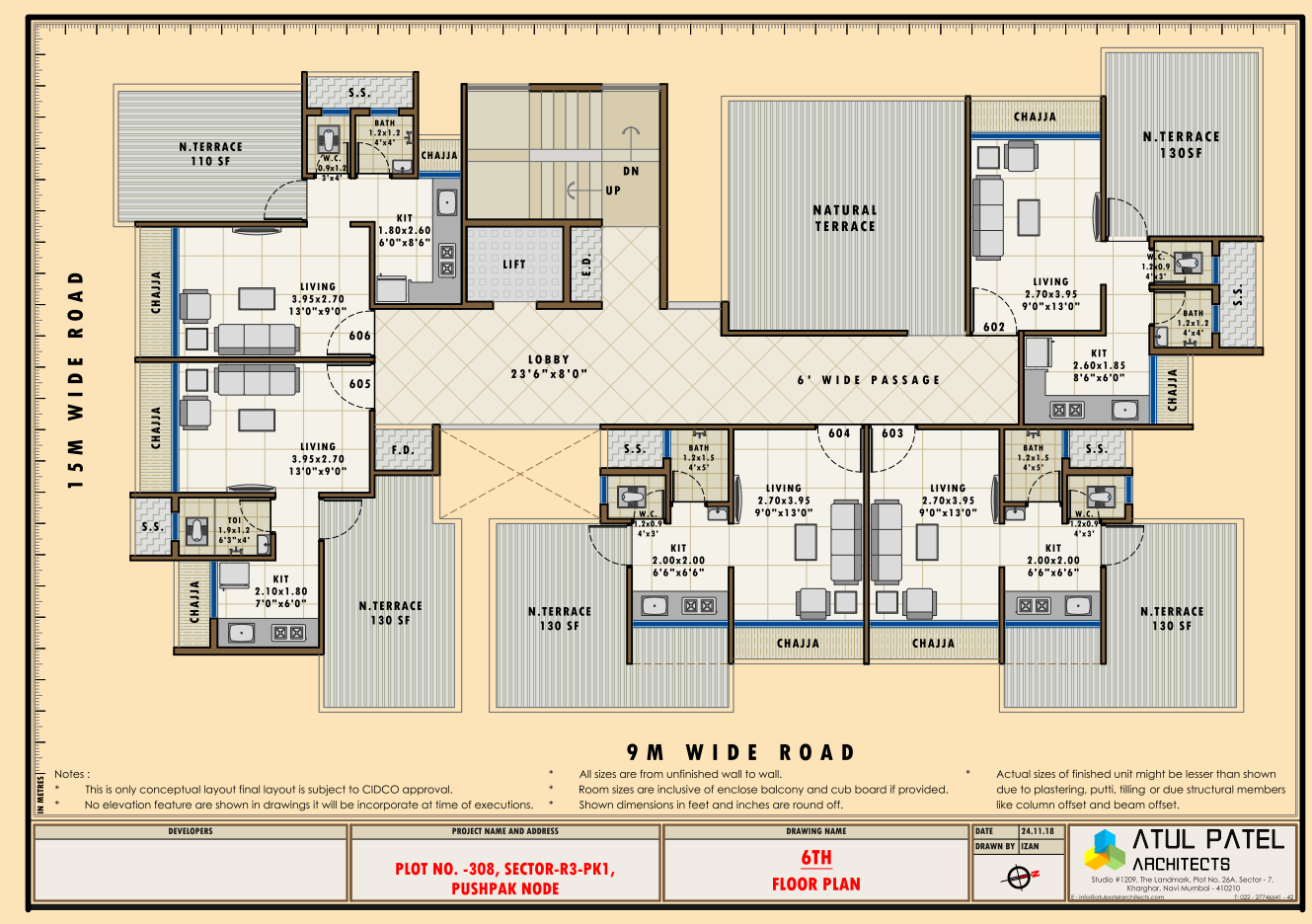
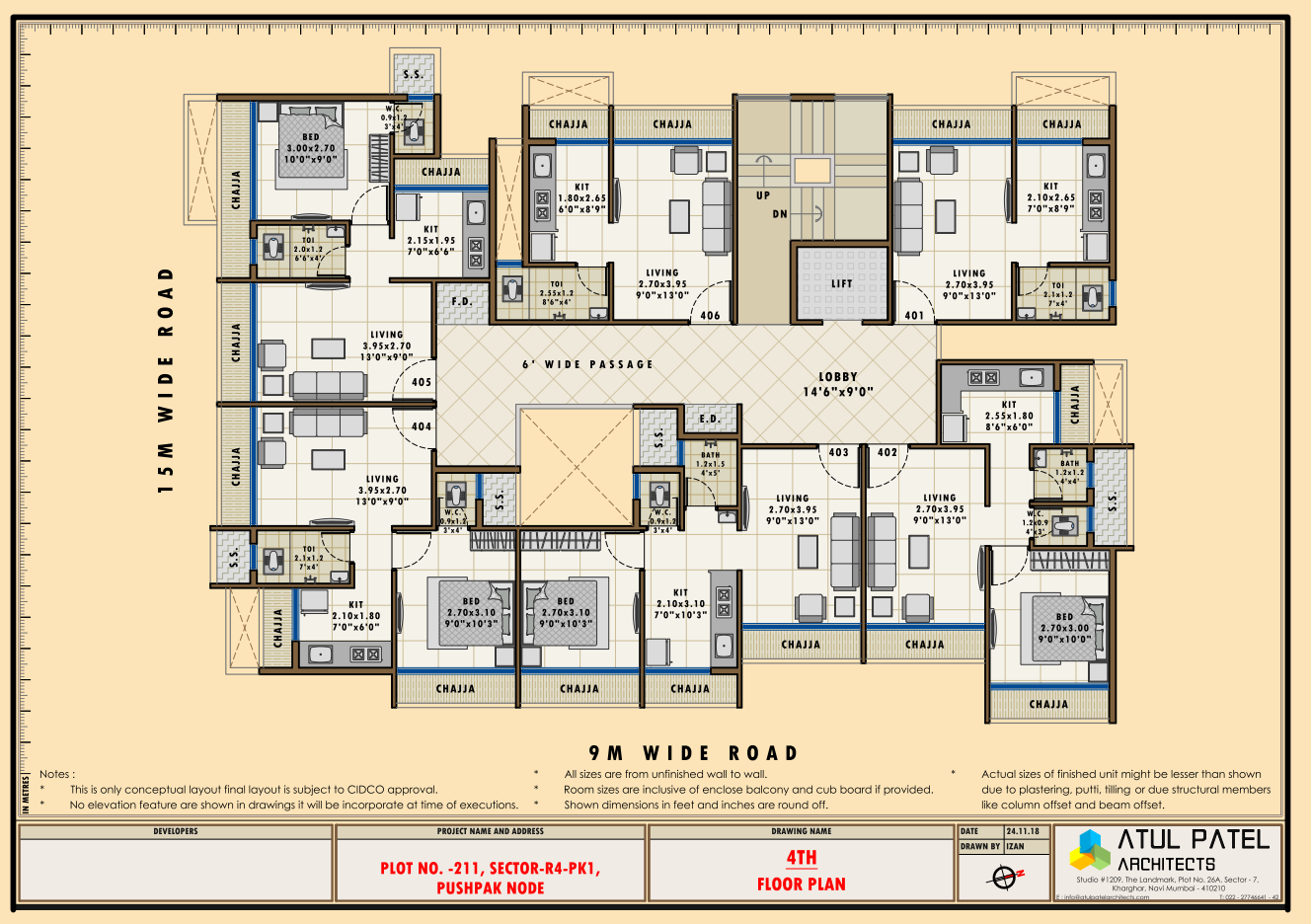
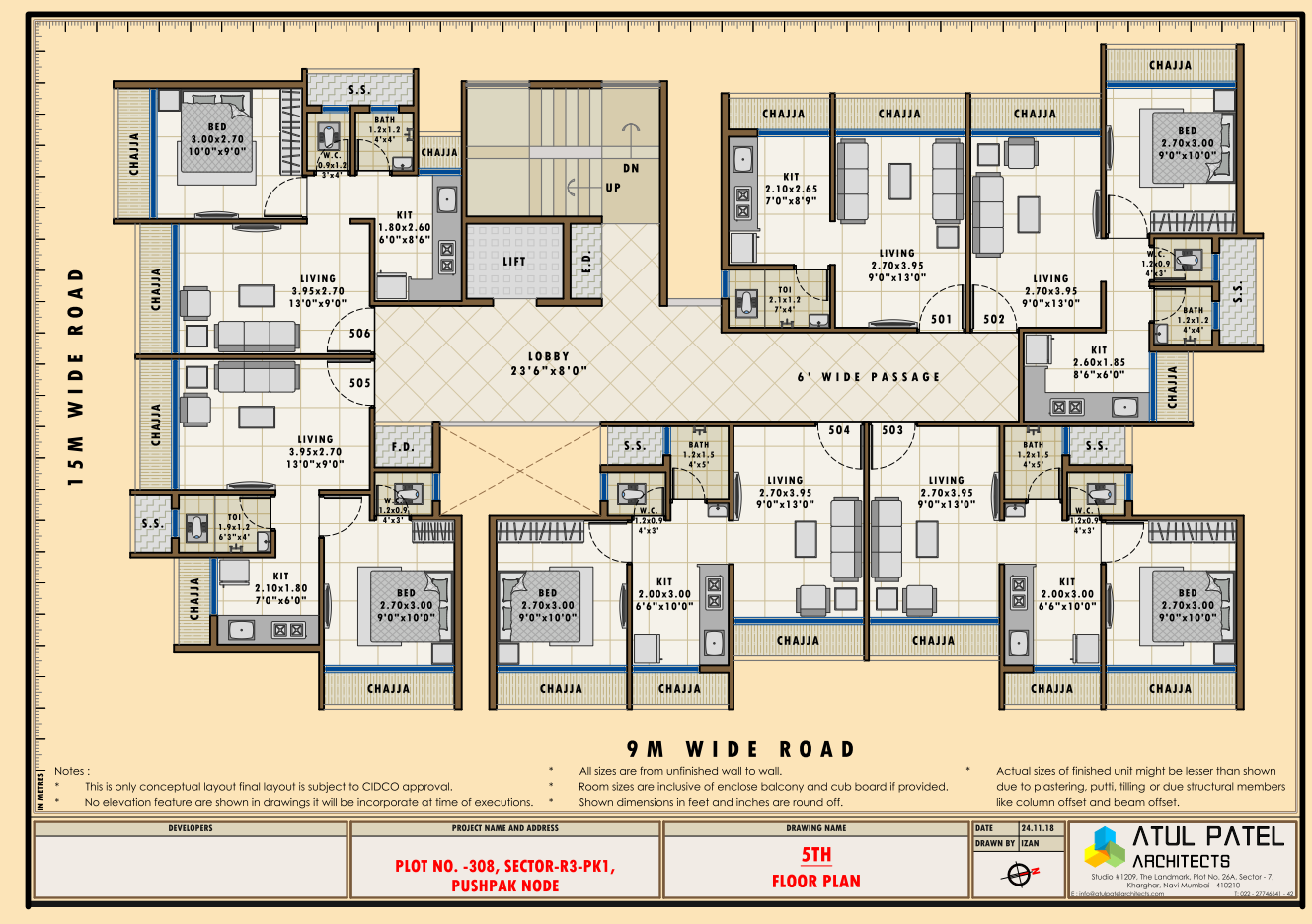
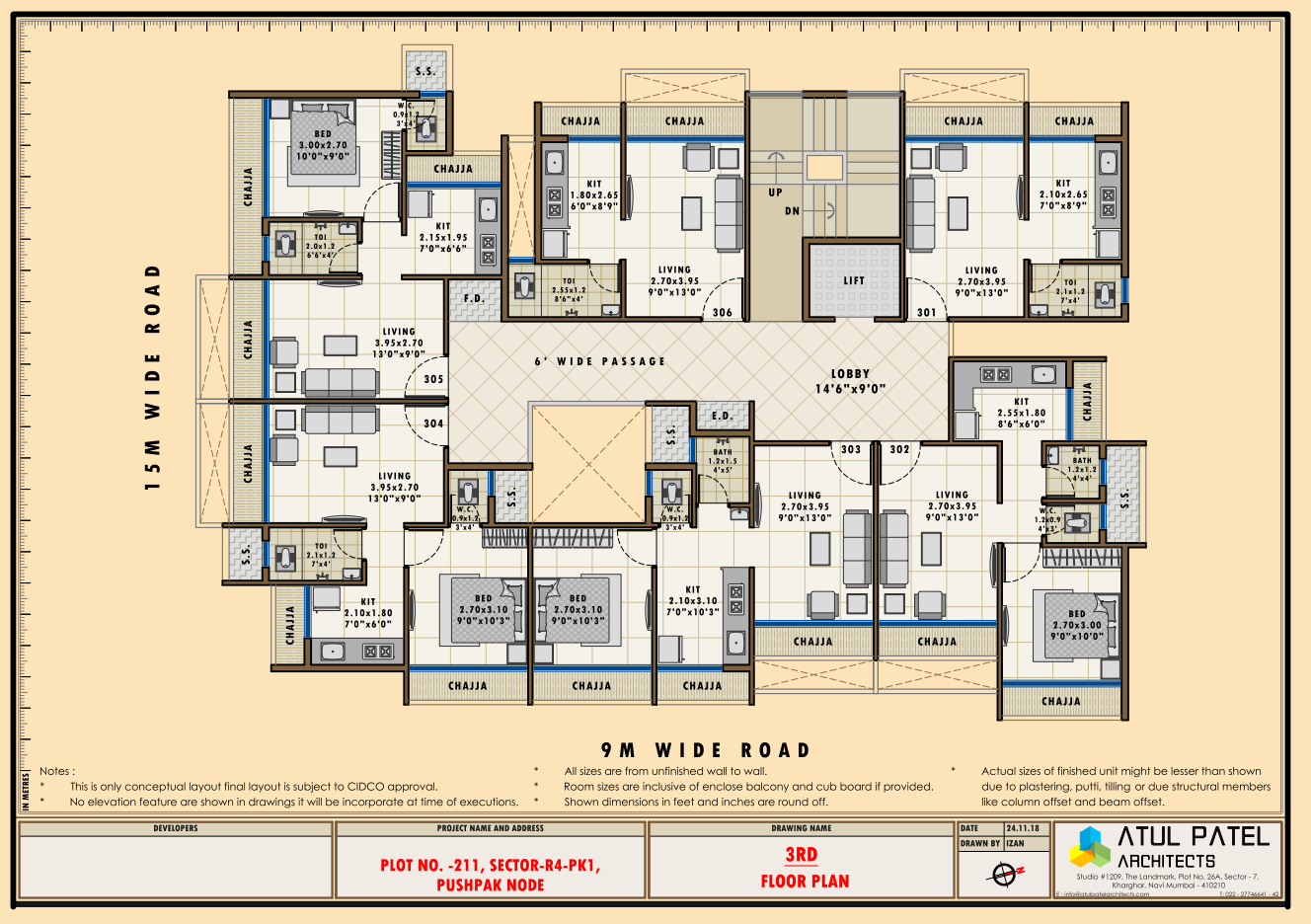
Concealed Copper Wiring - Modular Switches with
sufficient Electrical Points

OTHERS

Decorative Entrance Lobby,
Lift of Reputed Company.









Pratik Heritage



MAHA RERA - P52000019532

Plot No. 211, Sector-R4, Vadghar, Panvel

